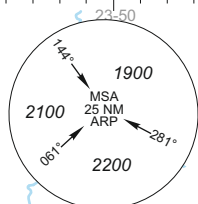


INSTRUMENT APPROACH
CHART - ICAOAERODROME ELEV 256
HEIGHTS RELATED TO
THR RWY 08 - ELEV 236TWR 124.200
118.500
ATIS 129.050KAUNAS
RNAV (GNSS) RWY 08ELEV, ALT, HGT IN FT
DIST IN NM
BRG, TRACK ARE MAG
VAR 7°E(2015)IAF VEBUS
4000
MAX IAS 230 KT

KA713

KA714

258° (265.0°T)

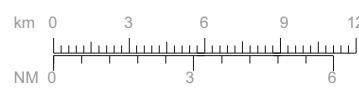
4.1

55-00

IAF MATAM
4000
MAX IAS 230 KT(IF) KA712
2500FAF KA711
2200MAPt
RW08IAF KNA
3500
MAX IAS 230 KTMATF
KA715
1900MAX IAS 185 KT
during missed
approach turnEY P3
1400 MSL
GNDCTR KAUNAS
1200 MSL
GNDEY D10
6150 MSL
GND

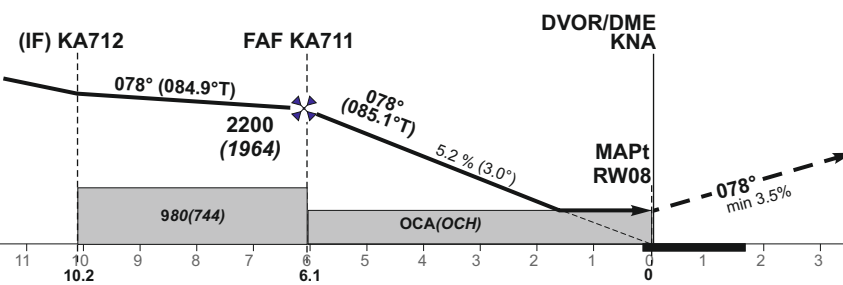
GAIZIŪNAI

SCALE 1 : 300 000



TRANSITION ALT 5000

MISSED APPROACH PROCEDURE

Climb on course 078° to KA715[A1900+],
then turn right [K185-], direct to IAF KNA
climbing to 3500.

TCH 49

THR ELEV 236

7NM to/from DTHR RWY 08
NM to/from DTHR RWY 08

OCA(OCH)		A	B	C	D	DIST TO RW08				5	4	3	2	
STRAIGHT-IN APPROACH	LNAV	760 (524)				Altitude				1870	1550	1240	920	
						Height				(1634)	(1314)	(1004)	(684)	
CIRCLING		see EYKA-AD-2.24-40 - 1				Timing not authorized for defining the MAPt								
Remark:						GS		Kts	80	100	120	140	160	180
						FAF-MAPt 6.1 NM		min:sec	4:35	3:40	3:03	2:37	2:17	2:02
						Rate of descent		ft/min	415	520	625	730	835	940
						For data tabulation see verso								

KAUNAS
RWY 08

AERONAUTICAL DATA TABULATION

RNAV (GNSS) INSTRUMENT APPROACH from IAFs(KNA, MATAM, VEBUS)

IAF KNA

Serial Number	Path Descriptor	Waypoint Identifier	Fly-over	Course/Track °M(°T)	Magnetic Variation	Distance (NM)/ Time	Turn Direction	Altitude (FT)/ Flight level	Speed (KT)	VPA/TCH	Navigation Specification
001	IF	KNA	—	—	-6.8	—	—	3500	-230	—	RNP APCH
002	TF	KA714	—	303(310.3)	-6.8	8.7	—	—	—	—	RNP APCH
003	TF	KA713	—	258(265.0)	-6.8	4.1	—	—	—	—	RNP APCH
004	TF	KA712	—	168(174.8)	-6.8	6.0	—	+2500	—	—	RNP APCH
005	TF	KA711	—	078(084.9)	-6.8	4.1	—	2200	—	—	RNP APCH
006	TF	RW08	Y	078(085.1)	-6.8	6.1	—	760	—	-2.98/49	RNP APCH
007	CF	KA715	Y	078(085.1)	-6.8	8.6	—	+1900	-185	—	RNP APCH
008	DF	KNA	—	—	-6.8	—	R	3500	-230	—	RNP APCH

IAF MATAM

Serial Number	Path Descriptor	Waypoint Identifier	Fly-over	Course/Track °M(°T)	Magnetic Variation	Distance (NM)/ Time	Turn Direction	Altitude (FT)/ Flight level	Speed (KT)	VPA/TCH	Navigation Specification
001	IF	MATAM	—	—	-6.8	—	—	+4000	-230	—	RNP APCH
002	TF	KA712	—	055(061.9)	-6.8	5.8	—	+2500	—	—	RNP APCH
003	TF	KA711	—	078(084.9)	-6.8	4.1	—	2200	—	—	RNP APCH
004	TF	RW08	Y	078(085.1)	-6.8	6.1	—	760	—	-2.98/49	RNP APCH
005	CF	KA715	Y	078(085.1)	-6.8	8.6	—	+1900	-185	—	RNP APCH
006	DF	KNA	—	—	-6.8	—	R	3500	-230	—	RNP APCH

IAF VEBUS

Serial Number	Path Descriptor	Waypoint Identifier	Fly-over	Course/Track °M(°T)	Magnetic Variation	Distance (NM)/ Time	Turn Direction	Altitude (FT)/ Flight level	Speed (KT)	VPA/TCH	Navigation Specification
001	IF	VEBUS	—	—	-6.8	—	—	+4000	-230	—	RNP APCH
002	TF	KA712	—	150(157.0)	-6.8	5.9	—	+2500	—	—	RNP APCH
003	TF	KA711	—	078(084.9)	-6.8	4.1	—	2200	—	—	RNP APCH
004	TF	RW08	Y	078(085.1)	-6.8	6.1	—	760	—	-2.98/49	RNP APCH
005	CF	KA715	Y	078(085.1)	-6.8	8.6	—	+1900	-185	—	RNP APCH
006	DF	KNA	—	—	-6.8	—	R	3500	-230	—	RNP APCH

WAYPOINT COORDINATES

FIX/POINTS	COORDINATES	FIX/POINTS	COORDINATES
MATAM (IAF)	54 54 08.9N 023 37 22.7E	KA712 (IF)	54 56 53.3N 023 46 18.4E
VEBUS (IAF)	55 02 19.2N 023 42 11.7E	KA711 (FAF)	54 57 14.9N 023 53 22.5E
KNA (IAF)	54 57 37.4N 024 03 59.1E	RW08 (MAPt)	54 57 46.4N 024 03 51.0E
KA714	55 03 12.8N 023 52 27.9E	KA715 (MATF)	54 58 29.8N 024 18 43.3E
KA713	55 02 51.2N 023 45 21.8E		